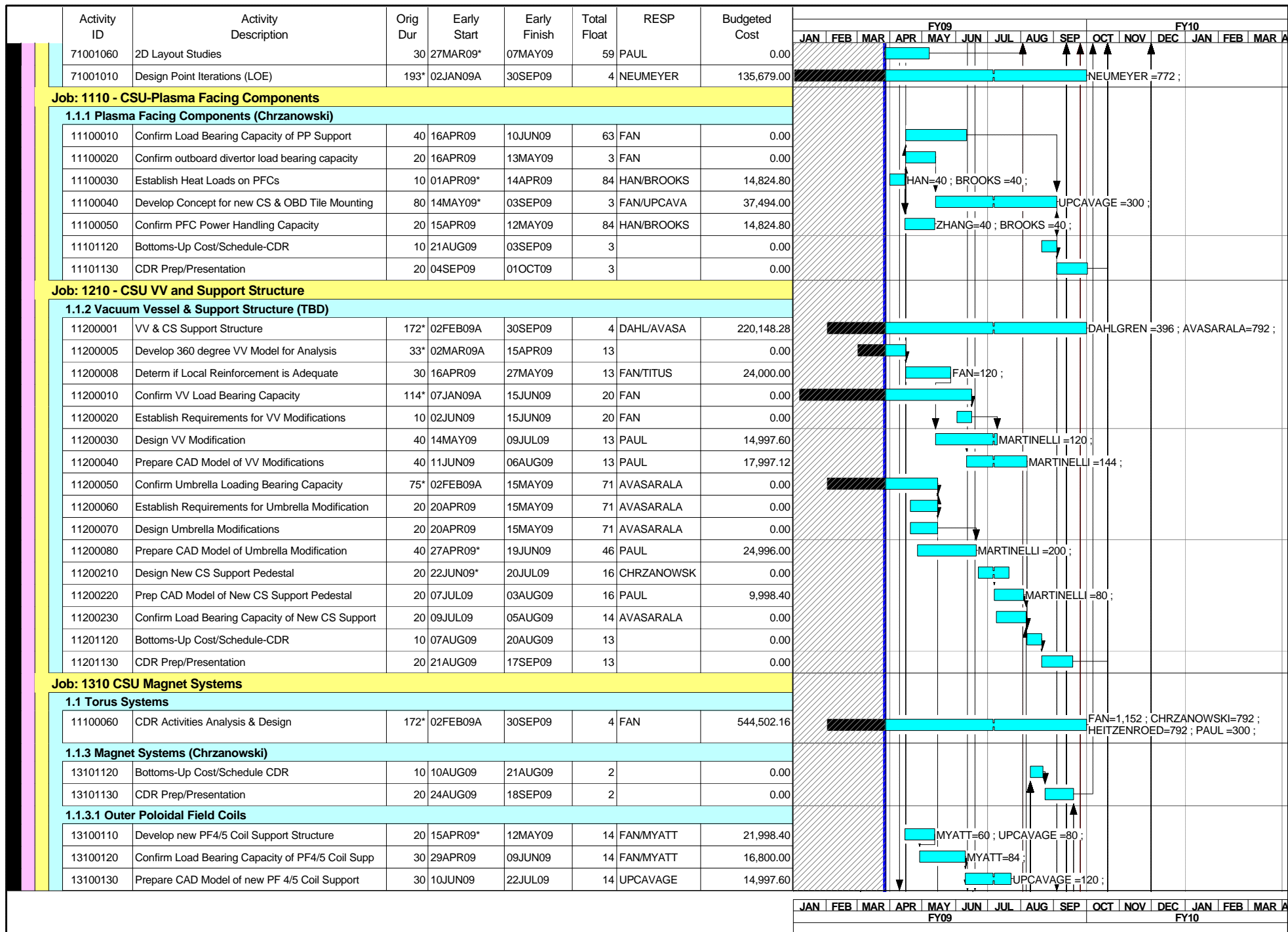


JAN FEB MAR APR MAY JUN JUL AUG SEP OCT NOV DEC JAN FEB MAR A
 FY09 FY10

█ Early Bar
█ Progress Bar
█ Critical Activity

© Primavera Systems, Inc.



JAN | FEB | MAR | APR | MAY | JUN | JUL | AUG | SEP | OCT | NOV | DEC | JAN | FEB | MAR | A
FY09 FY10

Early Bar	CS02
Progress Bar	
Critical Activity	

© Primavera Systems, Inc.

Activity ID	Activity Description	Orig Dur	Early Start	Early Finish	Total Float	RESP	Budgeted Cost	FY09												FY10						
								JAN	FEB	MAR	APR	MAY	JUN	JUL	AUG	SEP	OCT	NOV	DEC	JAN	FEB	MAR	APR			
1.1.3.2 Outer TF Coils																										
13100210	Develop TF Outer Leg Support Concept	40	02FEB09A	27MAR09A		FAN/HAN	14,824.80																			
13100220	Design TF Outer Leg Support	20	13APR09*	08MAY09	46	FAN/UPCAVA	9,998.40																			
13100230	Prepare CAD Model of TF Outer Leg Supports	30	27APR09	05JUN09	46	PAUL	14,997.60																			
13100240	Eval&Prep Rpr Plan for Outer TF Coil Clg Tubes	40	01MAY09*	25JUN09	32	CHRZANOWSK	16,295.40																			
1.1.3.3.1 CS-TF Inner Legs																										
13100310	Develop TF Joint (Woolley) Concept	40	07JAN09A	27MAR09A		BROOKS	50,033.70																			
13100312	Develop TF Joint (Titus) Concept	40	07JAN09A	27MAR09A		TITUS	57,600.00																			
13100314	Electromagnetic Analysis	40	01APR09*	26MAY09	24	PILLSBURY	43,200.00																			
13100316	Choose & Develop TF Joint Concept	53*	04MAR09A	15MAY09	11		46,824.80																			
13100320	Design TF Joint and Structural Supports	50	06APR09	12JUN09	11	DAHLGREN	156,282.48																			
13100325	Prep CAD Model of TF Joint & Struct Supports	40	20APR09	12JUN09	31	PAUL	0.00																			
13100327	Perf Mech test on sample TF Inner Leg Turn Insul	20	27MAY09	23JUN09	14	REED	14,760.00																			
13100328	Perf Elect Ins Test on sample TF In Leg Turn&Gnd	20	27MAY09	23JUN09	14	MEIGHAN	11,616.00																			
13100330	Build & Setup TF Joint Stand	45	15APR09*	16JUN09	9	KOZUB	430,565.44																			
13100335	Test Prototype TF Joint	60	17JUN09	09SEP09	9	KOZUB	218,099.52																			
13100340	Develop TF Inner Leg Bundle Mfg Plan	20	24JUN09	22JUL09	14	CHRZANOWSK	0.00																			
13100345	Prep CAD Model & Dwg for Full TF Bundle	80	01APR09*	22JUL09	14	PAUL	71,988.48																			
13100348	Determine Disruption Loads-Develop model-Opera	71*	07JAN09A	15APR09	3	HATCHER	14,060.00																			
13100350	Determine TF Inner Leg Insul Shear Loads	50	15APR09*	23JUN09	14	TITUS	24,000.00																			
13100360	Optimize TF Inner Leg Cooling Hole	40	01APR09*	26MAY09	34	HAN	26,684.64																			
13100370	Determine Loading of TF Turn Insul & Cent Hole	40	29APR09	23JUN09	14	TITUS	24,000.00																			
13100380	Confirm TF Inner Leg Conductor Mfg Feasibility	43*	02FEB09A	01APR09	17	CHRZANOWSK	0.00																			
1.1.3.3.2 CS-Ohmic Heating Solenoid																										
13100510	Optimize OH Conductor	20	15APR09*	12MAY09	44	BROOKS	14,824.80																			
13100520	Confirm OH Conductor Mfg Feasibility	20	10APR09	07MAY09	7	CHRZANOWSK	0.00																			
13100525	R&D Trial Verify Conductor X-section	30	11MAY09*	19JUN09	36	CHRZANOWSK	42,976.24																			
13100527	OH analysis	80	15APR09*	05AUG09	4	FAN/HAN	80,053.92																			
13100530	Design OH Coil, End Turn Joints & Leads	80	15APR09*	05AUG09	4	CHRZANOWSK	53,991.36																			
13100540	Prepare CAD Model of OH Coil	40	10JUN09	05AUG09	4	UPCAVAGE	37,494.00																			
13100550	Determine Conductor & Insulation Mechanical Load	60	13MAY09	05AUG09	4	FAN	0.00																			
13100560	Perf Mech Tests on i-line layer-layer OH Joints	60	24JUN09	16SEP09	4	KOZUB	62,637.52																			
13100570	Rvw Mech Test Data on Samples of OH turn insul	30	24JUN09	05AUG09	4	REED	24,183.20																			
13100580	Rvw Elect Test Data on Sampl of OH turn & Gnd In	30	24JUN09	05AUG09	4	MEIGHAN	5,808.00																			
13100590	Develop OH Coil Mfg Plan	20	09JUL09	05AUG09	4	CHRZANOWSK	0.00																			

Early Bar
 Progress Bar
 Critical Activity

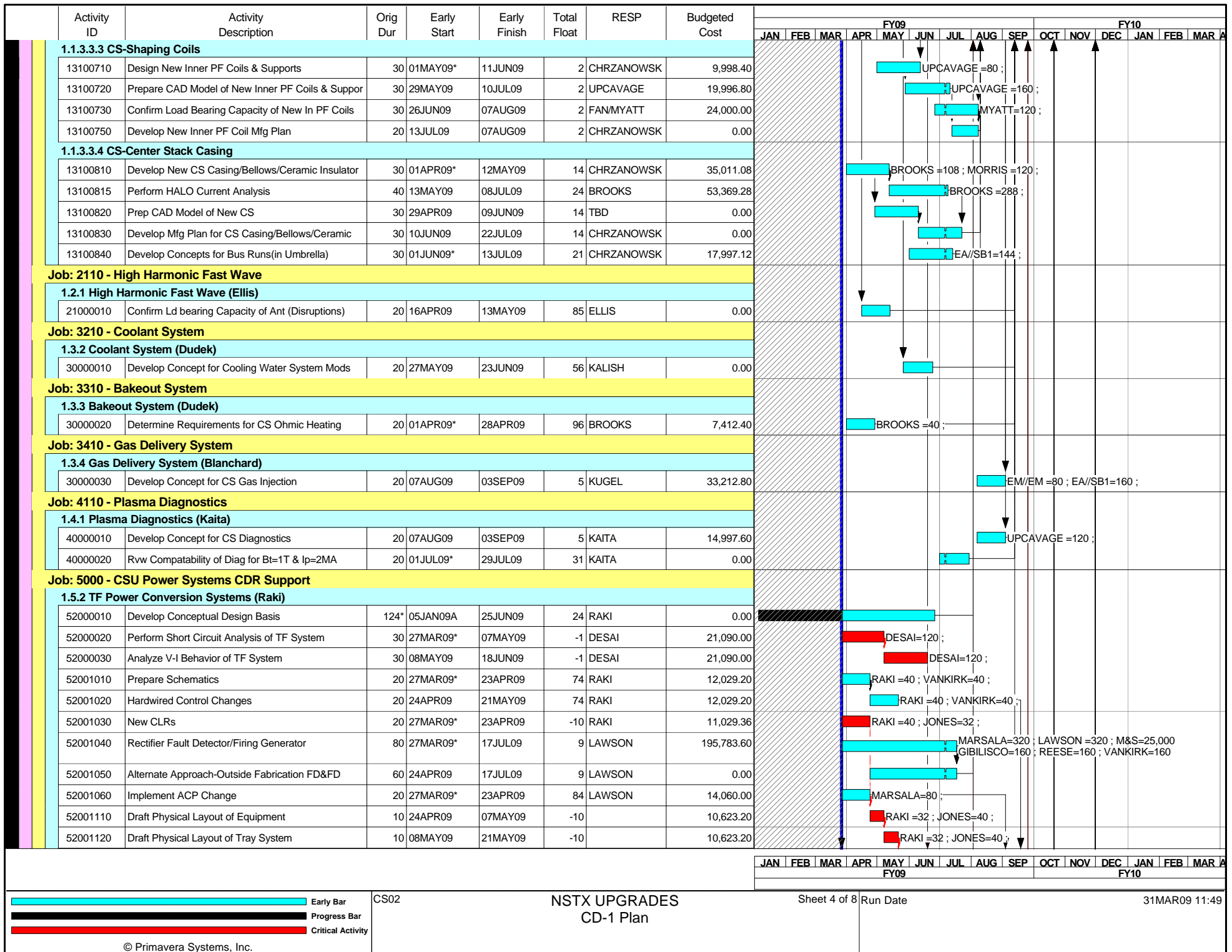
© Primavera Systems, Inc.

CS02

NSTX UPGRADES
CD-1 Plan

Sheet 3 of 8 Run Date

31MAR09 11:49



Activity ID	Activity Description	Orig Dur	Early Start	Early Finish	Total Float	RESP	Budgeted Cost	FY09												FY10		
								JAN	FEB	MAR	APR	MAY	JUN	JUL	AUG	SEP	OCT	NOV	DEC	JAN	FEB	MAR
24250080T	BL Reloc-Prep for PU Review	5	22SEP09	28SEP09	6	VIOLA	1,741.08	DENAULT=03; MITCHELL=06; VIOLA=03;														
24250090T	BL Reloc-Prep for DOE CDR	26	29SEP09	03NOV09	7	VIOLA	8,250.02	DENAULT=14; MITCHELL=29; VIOLA=14;														
Job: 2430 - 2nd NBI Decontamination																						
1.2.4.3 NBI-Decontamination																						
24300005T	YTD	61*	02JAN09A	27MAR09A		GENTILE	203,188.00	ytd=203,188														
24300010T	Remove & Decon-Calorimeter	22	30MAR09*	28APR09	8	GENTILE	95,847.45	EDWARDS=123; EM TECH=369; DENAULT=30; GENTILE=30; HP TECH=184; M&S=08;														
24300020T	Remove & Decon-Ion Dump	20	29APR09	26MAY09	8	GENTILE	95,847.45	EDWARDS=123; EM TECH=369; DENAULT=30; GENTILE=30; HP TECH=184; M&S=08;														
24300030T	Remove & Decon-Mag	22	27MAY09	25JUN09	8	GENTILE	95,847.45	EDWARDS=123; EM TECH=369; DENAULT=30; GENTILE=30; HP TECH=184; M&S=08;														
24300040T	Remove & Decon-90" Flange	22	26JUN09	28JUL09	8	GENTILE	95,847.45	EDWARDS=123; EM TECH=369; DENAULT=30; GENTILE=30; HP TECH=184; M&S=08;														
24300050T	Remove & Decon-Lid	21	29JUL09	26AUG09	8	GENTILE	95,847.45	EDWARDS=123; EM TECH=369; DENAULT=30; GENTILE=30; HP TECH=184; M&S=08;														
24300060T	Remove & Decon-Box	21	27AUG09	24SEP09	8	GENTILE	95,847.45	EDWARDS=123; EM TECH=369; DENAULT=30; GENTILE=30; HP TECH=184; M&S=08;														
24300070T	Update Parts list	119	10APR09	24SEP09	8	GENTILE	95,847.45	EDWARDS=123; EM TECH=369; DENAULT=30; GENTILE=30; HP TECH=184; M&S=08;														
24300105T	Fabricate 90" Flange	20	01APR09*	28APR09	50	TECH SHOP	6,075.20	tech shop=40hrs; m&s=\$2k														
24300110T	Fabricate Lid Stand	20	01MAY09*	28MAY09	50	TECH SHOP	34,140.80	tech shop=160hrs; m&s=\$16k														
24300120T	Fabricate spare Flange	20	01JUN09*	26JUN09	71	TECH SHOP	6,075.20	tech shop=40hrs; m&s=\$2k														
24300130T	Fabricate Ion Dump Flange	22*	02MAR09A	31MAR09	28	TECH SHOP	6,075.20	tech shop=40hrs; m&s=\$2k														
24300150T	Fabricate temp hardware storage boxes (6)	107*	02FEB09A	30JUN09	1,311	TECH SHOP	13,305.60	tech shop=120hrs; 41=\$2k														
Job: 2440 - 2nd NBI Beamline																						
1.2.4.4 NBI-Beamline																						
24400010T	Beamline-Layout Development	42	30MAR09*	26MAY09	6	DENAULT	17,906.74	DENAULT=23; GARZOTTO=23; SIEGEL=93;														
24400020T	Beamline-Prelim C&S Review	1	27MAY09	27MAY09	6	DENAULT	648.14	DENAULT=01; GARZOTTO=01; SIEGEL=03;														
24400030T	Beamline-Prep for Engr Peer Review	19	28MAY09	23JUN09	6	DENAULT	8,254.36	DENAULT=11; GARZOTTO=11; SIEGEL=42;														
24400040T	Beamline-Engr Peer Review	1	24JUN09	24JUN09	6	DENAULT	648.14	DENAULT=01; GARZOTTO=01; SIEGEL=03;														
24400050T	Beamline-C&S Development	23	25JUN09	28JUL09	6	DENAULT	9,527.40	DENAULT=12; GARZOTTO=12; SIEGEL=50;														
24400060T	Beamline-Internal PPPL C&S Review	1	29JUL09	29JUL09	6	DENAULT	648.14	DENAULT=01; GARZOTTO=01; SIEGEL=03;														
24400070T	Beamline-Prep for External Engr Review	38	30JUL09	21SEP09	6	DENAULT	15,837.34	DENAULT=20; GARZOTTO=20; SIEGEL=83;														
24400080T	Beamline-Prep for PU Review	5	22SEP09	28SEP09	6	DENAULT	2,194.38	DENAULT=03; GARZOTTO=03; SIEGEL=11;														
24400090T	Beamline-Prep for DOE CDR	26	29SEP09	03NOV09	7	DENAULT	10,800.44	DENAULT=13; GARZOTTO=13; SIEGEL=58;														
Job: 2450 - 2nd NBI Services																						
1.2.4.5 NBI-Services																						
24500005T	YTD	61*	02JAN09A	27MAR09A		DENAULT	3,315.00	ytd=3315														
24500010T	BL Serv-Layout Development	42	30MAR09*	26MAY09	6	DENAULT	24,463.54	DENAULT=47; GARZOTTO=47; MITCHELL=93;														
24500020T	BL Serv-Prelim C&S Review	1	27MAY09	27MAY09	6	DENAULT	648.14	DENAULT=01; GARZOTTO=01; MITCHELL=03;														
24500030T	BL Serv-Prep for Engr Peer Review	19	28MAY09	23JUN09	6	DENAULT	10,986.36	DENAULT=21; GARZOTTO=21; MITCHELL=42;														
24500040T	BL Serv-Engr Peer Review	1	24JUN09	24JUN09	6	DENAULT	648.14	DENAULT=01; GARZOTTO=01; MITCHELL=03;														
24500050T	BL Serv-C&S Development	23	25JUN09	28JUL09	6	DENAULT	13,079.00	DENAULT=25; GARZOTTO=25; MITCHELL=50;														




Early Bar
 Progress Bar
 Critical Activity

© Primavera Systems, Inc.

Activity ID	Activity Description	Orig Dur	Early Start	Early Finish	Total Float	RESP	Budgeted Cost	FY09												FY10		
								JAN	FEB	MAR	APR	MAY	JUN	JUL	AUG	SEP	OCT	NOV	DEC	JAN	FEB	MAR
24500060T	BL Serv-Internal PPPL C&S Review	1	29JUL09	29JUL09	6	DENAU	648.14													DENAULT=01;GARZOTTO=01;MITCHELL=03;		
24500070T	BL Serv-Prep for External Engr Review	38	30JUL09	21SEP09	6	DENAU	21,847.74	DENAULT=42;GARZOTTO=42;MITCHELL=83;														
24500080T	BL Serv-Prep for PU Review	5	22SEP09	28SEP09	6	DENAU	3,013.98	DENAULT=06;GARZOTTO=06;MITCHELL=11;														
24500090T	BL Serv-Prep for DOE CDR	26	29SEP09	03NOV09	7	DENAU	15,171.64	DENAULT=29;GARZOTTO=29;MITCHELL=58;														
Job: 2460 - 2nd NBI Armor																						
1.2.4.6 NBI-Armor/Protective Plates																						
24600010T	Armor-Layout Development	42	30MAR09*	26MAY09	6	PRINISKI	19,387.54													PRINISKI =47 ; WINKELMAN=93 ;		
24600020T	Armor-Prelim C&S Review	1	27MAY09	27MAY09	6	PRINISKI	540.14													PRINISKI =01 ; WINKELMAN=03 ;		
24600030T	Armor-Prep for Engr Peer Review	19	28MAY09	23JUN09	6	PRINISKI	8,718.36													PRINISKI =21 ; WINKELMAN=42 ;		
24600040T	Armor-Engr Peer Review	1	24JUN09	24JUN09	6	PRINISKI	540.14													PRINISKI =01 ; WINKELMAN=03 ;		
24600050T	Armor-C&S Development	23	25JUN09	28JUL09	6	PRINISKI	10,379.00													PRINISKI =25 ; WINKELMAN=50 ;		
24600060T	Armor-Internal PPPL C&S Review	1	29JUL09	29JUL09	6	PRINISKI	540.14													PRINISKI =01 ; WINKELMAN=03 ;		
24600070T	Armor-Prep for External Engr Review	38	30JUL09	21SEP09	6	PRINISKI	17,311.74													PRINISKI =42 ; WINKELMAN=83 ;		
24600080T	Armor-Prep for PU Review	5	22SEP09	28SEP09	6	PRINISKI	2,365.98													PRINISKI =06 ; WINKELMAN=11 ;		
24600090T	Armor-Prep for DOE CDR	26	29SEP09	03NOV09	7	PRINISKI	12,039.64													PRINISKI =29 ; WINKELMAN=58 ;		
Job: 2470 - 2nd NBI Power & Controls																						
1.2.4.7 NBI-Power&Controls																						
24700005T	YTD	61*	02JAN09A	27MAR09A		RAKI	1,501.00	ytd=1501														
24700010T	Power Sys-Layout Development	42	30MAR09*	26MAY09	6	RAKI	37,303.40													EDWARDS=92;ELECTDSNR=58;RAKI=92;		
24700020T	Power Sys-Prelim C&S Review	1	27MAY09	27MAY09	6	RAKI	1,105.02													EDWARDS=03;ELECTDSNR=01;RAKI=03;		
24700030T	Power Sys-Prep for Engr Peer Review	19	28MAY09	23JUN09	6	RAKI	16,643.36													EDWARDS=41;ELECTDSNR=26;RAKI=41;		
24700040T	Power Sys-Engr Peer Review	1	24JUN09	24JUN09	6	RAKI	1,105.02													EDWARDS=03;ELECTDSNR=01;RAKI=03;		
24700050T	Power Sys-C&S Development	23	25JUN09	28JUL09	6	RAKI	20,660.04													EDWARDS=51;ELECTDSNR=32;RAKI=51;		
24700060T	Power Sys-Internal PPPL C&S Review	1	29JUL09	29JUL09	6	RAKI	1,105.02													EDWARDS=03;ELECTDSNR=01;RAKI=03;		
24700070T	Power Sys-Prep for External Engr Review	38	30JUL09	21SEP09	6	RAKI	34,065.06													EDWARDS=84;ELECTDSNR=53;RAKI=84;		
24700080T	Power Sys-Prep for PU Review	5	22SEP09	28SEP09	6	RAKI	4,468.34	EDWARDS=11;ELECTDSNR=07;RAKI=11;														
24700090T	Power Sys-Prep for DOE CDR	26	29SEP09	03NOV09	7	RAKI	23,446.72	EDWARDS=58;ELECTDSNR=36;RAKI=58;														
24710010T	Controls-Layout Development	42	30MAR09*	26MAY09	6	CROPPER	32,092.52													CROPPER=92;ELECTDSNR=58;ROSSI=92;		
24710020T	Controls-Prelim C&S Review	1	27MAY09	27MAY09	6	CROPPER	935.10													CROPPER=03;ELECTDSNR=01;ROSSI=03;		
24710030T	Controls-Prep for Engr Peer Review	19	28MAY09	23JUN09	6	CROPPER	14,321.12													CROPPER=41;ELECTDSNR=26;ROSSI=41;		
24710040T	Controls-Engr Peer Review	1	24JUN09	24JUN09	6	CROPPER	935.10													CROPPER=03;ELECTDSNR=01;ROSSI=03;		
24710050T	Controls-C&S Development	23	25JUN09	28JUL09	6	CROPPER	17,771.40													CROPPER=51;ELECTDSNR=32;ROSSI=51;		
24710060T	Controls-Internal PPPL C&S Review	1	29JUL09	29JUL09	6	CROPPER	935.10													CROPPER=03;ELECTDSNR=01;ROSSI=03;		
24710070T	Controls-Prep for External Engr Review	38	30JUL09	21SEP09	6	CROPPER	29,307.30	CROPPER=84;ELECTDSNR=53;ROSSI=84;														
24710080T	Controls-Prep for PU Review	5	22SEP09	28SEP09	6	CROPPER	3,845.30	CROPPER=11;ELECTDSNR=07;ROSSI=11;														
24710090T	Controls-Prep for DOE CDR	26	29SEP09	03NOV09	7	CROPPER	20,161.60	CROPPER=58;ELECTDSNR=36;ROSSI=58;														
Job: 2480 - 2nd NBI/TVPS Duct & VV																						
1.2.4.8 NBI-Nozzle/Duct																						
24800005T	YTD	61*	02JAN09A	27MAR09A		PRINISKI	23,169.00	ytd=23169														
								JAN FEB MAR APR MAY JUN JUL AUG SEP OCT NOV DEC JAN FEB MAR A														
								FY09												FY10		
		CS02		NSTX UPGRADES				Sheet 7 of 8 Run Date												31MAR09 11:49		
				CD-1 Plan																		
© Primavera Systems, Inc.																						

Activity ID	Activity Description	Orig Dur	Early Start	Early Finish	Total Float	RESP	Budgeted Cost	FY09												FY10							
								JAN	FEB	MAR	APR	MAY	JUN	JUL	AUG	SEP	OCT	NOV	DEC	JAN	FEB	MAR					
24800010T	NBI/TVPS Duct&VV-Layout Development	42	30MAR09*	26MAY09	6	PRINISKI	50,214.10																				
24800020T	NBI/TVPS Duct&VV-Prelim C&S Review	1	27MAY09	27MAY09	6	PRINISKI	1,160.72																				
24800030T	NBI/TVPS Duct&VV-Prep for Engr Peer Review	19	28MAY09	23JUN09	6	PRINISKI	22,888.32																				
24800040T	NBI/TVPS Duct&VV-Engr Peer Review	1	24JUN09	24JUN09	6	PRINISKI	1,160.72																				
24800050T	NBI/TVPS Duct&VV-C&S Development	23	25JUN09	28JUL09	6	PRINISKI	27,781.16																				
24800060T	NBI/TVPS Duct&VV-Internal PPPL C&S Review	1	29JUL09	29JUL09	6	PRINISKI	1,160.72																				
24800070T	NBI/TVPS Duct&VV-Prep for External Engr Review	38	30JUL09	21SEP09	6	PRINISKI	45,901.62																				
24800080T	NBI/TVPS Duct&VV-Prep for PU Review	5	22SEP09	28SEP09	6	PRINISKI	6,053.56																				
24800090T	NBI/TVPS Duct&VV-Prep for DOE CDR	26	29SEP09	03NOV09	7	PRINISKI	31,223.10																				
Job: 2490 - NTC Equip Relocations																											
1.2.4.9 NBI-Equipment Relocations																											
24900005T	YTD	61*	02JAN09A	27MAR09A		PERRY	1,718.00																				
24900010T	NTC Equip Relc-Layout Development	42	30MAR09*	26MAY09	6	PERRY	28,556.80																				
24900020T	NTC Equip Relc-Prelim C&S Review	1	27MAY09	27MAY09	6	PERRY	931.20																				
24900030T	NTC Equip Relc-Prep for Engr Peer Review	19	28MAY09	23JUN09	6	PERRY	12,726.40																				
24900040T	NTC Equip Relc-Engr Peer Review	1	24JUN09	24JUN09	6	PERRY	931.20																				
24900050T	NTC Equip Relc-C&S Development	23	25JUN09	28JUL09	6	PERRY	15,830.40																				
24900060T	NTC Equip Relc-Internal PPPL C&S Review	1	29JUL09	29JUL09	6	PERRY	931.20																				
24900070T	NTC Equip Relc-Prep for External Engr Review	38	30JUL09	21SEP09	6	PERRY	26,073.60																				
24900080T	NTC Equip Relc-Prep for PU Review	5	22SEP09	28SEP09	6	PERRY	3,414.40																				
24900090T	NTC Equip Relc-Prep for DOE CDR	26	29SEP09	03NOV09	7	PERRY	18,003.20																				

JAN	FEB	MAR	APR	MAY	JUN	JUL	AUG	SEP	OCT	NOV	DEC	JAN	FEB	MAR
FY09									FY10					

 Early Bar
 Progress Bar
 Critical Activity

© Primavera Systems, Inc.